



H S E

HEALTH SAFETY ENVIRONMENTAL

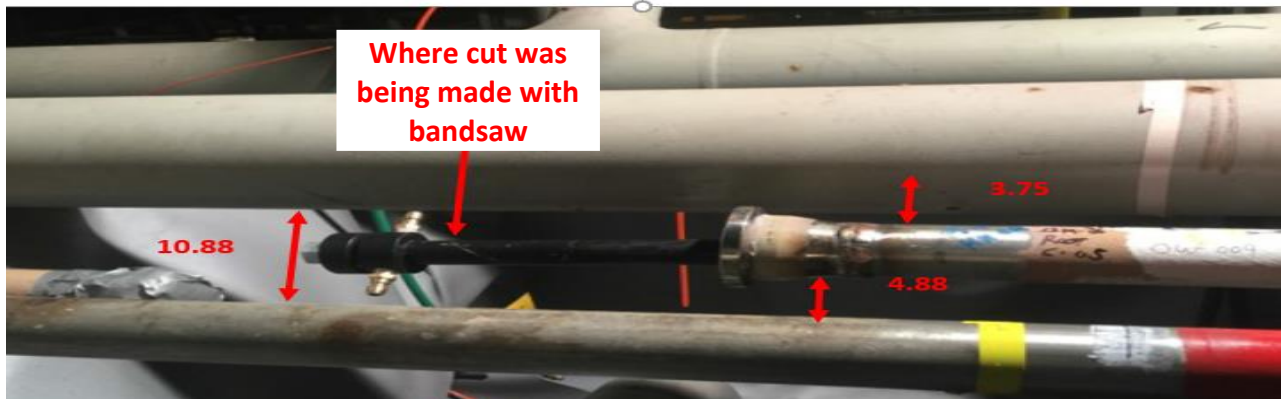


Alert #: SA 5-19

Date: 04/11/19

INJURY TO LEFT HAND WHILE ATTEMPTING TO CUT A PLUG

IP was working on HPU piping TP-509 to remove a Carber plug from a 2" pipe. Due to excessive root pass weld material where the pipe was welded to the flange, the Carber plug could not be removed. It was determined that a portion of the plug would have to be cut, so the plug could be pushed back in the pipe past the root pass weld so the weld could be ground down and the plug removed. While attempting to cut the plug with the band saw in his right hand, and holding the loose plug in his left hand, the IP suffered a small laceration to his left hand when the saw came off the pipe and struck his hand resulting in a first aid.



Error Precursors/Corrective Actions

(1) **Congested Work Area** - working in a congested work area and had to remove left hand from saw to secure the plug while cutting it.

Why? Hazards of the task were not adequately identified

Corrective Action: Stop the job and get the right people (CARBER) involved with plug removal.

(2) **Lack of Understanding** – IP's work scope was not recognized or acknowledged by the PA and it was decided that CARBER would cold cut their own tool from the pipe using a band saw as discussed at the TBT.

Why? Requirements of CoW policy were not followed

Corrective Action: Do not perform work that is not properly identified on work permit and that is not risk assessed

(3) **Unclear Goals, Roles** - Crew Supervisor not notify by the PA/Crew of the scope change

Why? PA instructed the IP to cut the CARBER plug which was outside of the scope of work as discussed at the TBT

Corrective Action: When work plan changes, utilize Stop Work Authority or contact Supervisor

(4) **Inaccurate Risk Perception** - PA/Crew were overconfident and continued to perform work outside of planned work scope

Why? Crew was waiting on CARBER for two to three hours to complete another task

Corrective Action: Ensure personnel feel empowered to stop a job or contact their Supervisor before beginning work they are not prepared for.

SAFETY ALERT