



Putting People First Since 1948



Alert #: SA 1-18

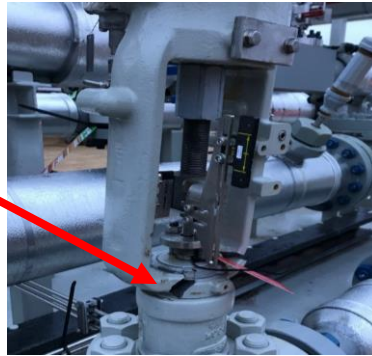
Date: 2/15/2018

## CRANE INCIDENT

Recently, our company experienced a crane related malfunction that resulted in damage to a skid unit. As the Crane Operator was holding a 48,000# load in place 3' above the ground, the load suddenly fell resulting in a fractured valve housing. The damage associated with the load failure was minor; however, the potential for serious property damage or injury to personnel was evident.

It was later determined through an inspection that brake failure was the cause of the incident. This type of information can and shall only be determined by service professionals qualified to perform this type of inspection and subsequent repair.

Fractured Housing



### Lesson Learned

- ✓ Anytime a lifting device is experiencing technical problems, it shall be immediately taken out of service until a third party service provider can inspect and release the machine for further use.

# Always remember!

GIS establishes policies and procedures for a reason and it is vital to everyone's success and safety that we follow them. Not following policies and procedures could lead to potential incidents like the one described above.

*Report all incidents immediately to the GIS Hotline 1-855-543-5163.*



# SAFETY ALERT